

# Cabinet Lock Overview

ELECTRONIC SECURITY HARDWARE HES & SECURITRON | MEDECO

The global leader in  
door opening solutions



# Big Things are Happening in Small Spaces

In today's world, you don't have to look far before you find a cabinet or enclosure that is protecting some kind of a physical asset, data, or access to critical infrastructure.

Emerging trends such as enterprise managed employee lockers tell us that access control is as much about convenience as it is security. Whether you're securing lockers, drawers, doors or enclosures, we want to hear from you.

We offer a wide range of flexible, scalable solutions to meet your needs ranging from server cabinets to employee lockers and other secure storage enclosures.

- Cost effective, aesthetically pleasing low profile solutions
- Mechanical, electromagnetic, electromechanical and integrated access control options
- Your choice of wired or wireless

Contact us today: [customerservice.esh@assaabloy.com](mailto:customerservice.esh@assaabloy.com)

## Areas of Application

- Secure file storage
- Document & equipment storage
- Chemical storage
- Display cases
- Mailrooms
- Employee lockers
- Pharmaceuticals lockers (controlled substances)
- Evidence storage (CoC – Chain of Custody)
- Data server cabinets
- Unmanned infrastructures
- Visitor lockers (or storage)





**Medeco  
M3**  
Latchbolt



**Medeco  
X4**  
Deadbolt



**Medeco  
XT**  
Utility Cam Lock

### How to Order

| Model | Cylinder Technology   | Finish   | Keyway          | Pinning         |
|-------|-----------------------|--|-----------------|-----------------|
| X     | G                     | 26   | LT              | P               |
|       | T Medeco <sup>3</sup> | 26 Satin chrome finish standard. Other finishes available, depending on volume |                 | S Sub-assembled |
|       | N Medeco X4           |  | P Pinned        |                 |
|       | G Medeco XT           |  | M Master Keyway |                 |

# Mechanical

A cabinet lock is only as secure as the key override that protects it. From mechanical to integrated access control cabinet locks, Medeco provides flexible, scalable mechanical and intelligent key override options to provide the highest level of security.

All Medeco mechanical cabinet locks feature solid brass and steel construction, available with either fixed or removable mechanical or intelligent key override options. Featuring patented key programs to prevent the unauthorized duplication of keys and maintain system integrity.

- Mechanical key override options: M3 & X4 (SFIC)
  - Available keyed alike, keyed different, or master keyed
  - Patented key control
- Electronic intelligent key override options: XT

## HES K20

- Supports 13.56 MHz RFID card technologies
  - MIFARE Classic™ or MIFARE Ultralight™
- Up to 20 Master credentials
- Up to 20 User credentials

### How to Order

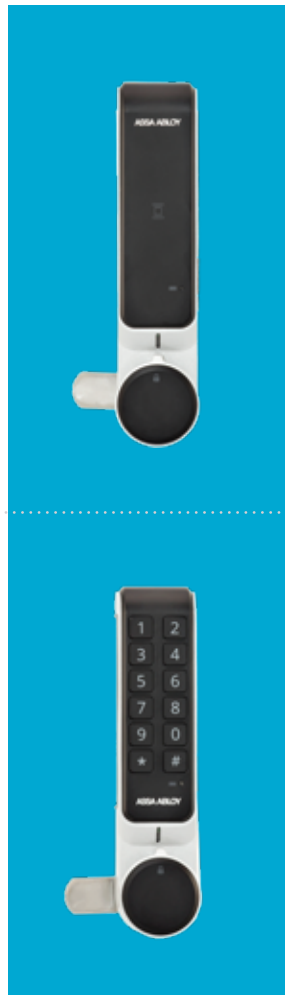
|              |
|--------------|
| Model Series |
| <b>K20</b>   |
| K20          |

## HES KP20

- 12-button keypad
- One master code
- One user code

### How to Order

|              |
|--------------|
| Model Series |
| <b>KP20</b>  |
| KP20         |



# Stand Alone Keypad

## HES K20 & KP20

The low cost HES K20 (13.56 MHz RFID) and KP20 (12-button) cabinet locks with over 75 lbs of holding force for low to medium security applications.

- User friendly programming
- No audit trail
- Supports both Public (one time use) and Private (on-going) programming modes
- Accommodates door thickness 1/16" to 7/8" [1 to 23 mm]
- Battery powered by 3x AAA alkaline batteries (est. battery life 30K cycles)

# Wireless | Aperio®



## HES K100

The flexible integrated cabinet locking solution for use with swinging and sliding cabinet doors and drawers with a door thickness of up to 2-1/4". The HES K100 comes standard with locked state and tamper monitoring, optional mechanical key override and over 150 lbs of holding force. It uses local 2.4 GHz wireless communication, between the lock and an Aperio® hub, to bring access control to cabinet doors and drawers where audit trail and real-time monitoring are required.

## HES KS100

Designed to install easily on most cam-activated swing handle server cabinet doors with a 150 x 25 mm lock prep, the HES KS100 comes standard with locked state monitoring and supports a 6 or 7-pin SFIC (Small Format Interchangeable Core) mechanical key override. For high security applications, an optional extended DPS monitoring sensor can be connected to ensure that the cabinet is closed, locked and secure. It uses local 2.4 GHz wireless communication, between the lock and an Aperio® hub, to bring real-time monitoring and managed access to server cabinet doors that protect against malicious attacks or tampering.



## HES K100

- Supports HID multiCLASS SE® card technologies
- Battery powered by 2x AA lithium batteries (est. battery life 50K cycles)
- Pinch (P) and Lever (L) knob options

### Accessories

**OBS-622** Open back strike plate for drawers

### How to Order

| Series      | Model  | Card Technology   | Color          | Knob Type      | Shaft Length (Door Thickness)                            |
|-------------|--|---|----------------|----------------|--|
| <b>K100</b> | <b>- 622</b>   | <b>- IPS</b>  | <b>- B</b>     | <b>P</b>       | <b>2</b>   |
|             | <b>622</b> Non-Paired for Doors (standard)                     | <b>IPS</b> HID Prox®, Kantech ioProx, HID iCLASS®, HID iCLASS SE® (SIO-enabled),                                      | <b>B</b> Black | <b>P</b> Pinch | <b>(Blank)</b> 1/16" to 1/2"                             |
|             | <b>622D</b> Non-Paired for Drawers                             | HID iCLASS® Seos™, HID MIFARE® SE, HID DESFire® EV1 SE, MIFARE Classic, MIFARE DESFire EV1, NFC-enabled mobile phones |                | <b>L</b> Lever | <b>2</b> ≥ 1/2" to 1-1/2"<br><b>3</b> ≥ 1-1/2" to 2-1/4" |
|             | <b>622H</b> Factory Paired for DOORS with AH20 1:1 Wiegand Hub |   |                |                |  |



## HES KS100

- Supports HID multiCLASS SE® card technologies
- Battery powered by 2x AA lithium batteries (est. battery life 50K cycles)
- Integrated locked state (handle), cam rotation and tamper monitoring
- Optional external DPS sensor for real-time door status monitoring

### Accessories

**SFIC** Medeco X4 SFIC cylinder and 2 keys (1 control, 1 user)

**SFIC-BC** KS SFIC blank, black plastic core

**KS-DPS** Surface mount DPS (external)

**KS-CAM38** CAM: 38MM-1

**KS-CAM45** CAM: 45MM-5

### How to Order

| Series       | Model  | Card Technology  | Color          | Key Override (Optional)   |
|--------------|--|--|----------------|---|
| <b>KS100</b> | <b>- S</b>   | <b>- IPS</b>   | <b>- B</b>     | <b>- K1</b>   |
|              | <b>S</b> Non-Paired for Swing Handle Server Cabinet Doors (standard) | <b>IPS</b> HID Prox®, Kantech ioProx, HID iCLASS®, HID iCLASS SE® (SIO-enabled), HID iCLASS® Seos™, HID MIFARE® SE, HID DESFire® EV1 SE, MIFARE Classic, MIFARE DESFire EV1, NFC-enabled mobile phones | <b>B</b> Black | <b>(Blank)</b> No SFIC or Blank Plastic Core (Standard)   |
|              |  |  |                | <b>BC</b> SFIC blank, black plastic core  |
|              |  |  |                | <b>K1</b> Medeco X4 SFIC, Keyed Differently (DGV Commercial Keyway), with 2 Keys (1 Control & 1 User Key)   |
|              |  |  |                | <b>MK-XXXXXX</b> Medeco X4 SFIC, Master Keyed (DGV Commercial Keyway), with 2 Keys (1 Control & 1 User Key) |

# HES K200

- Supports HID multiCLASS SE® card technologies
- Hard powered by 12-24VDC (+/-10%)
- ElectroLynx® connectors for plug-n-play connectivity

## Accessories

**OBS-622** Open back strike plate for Drawers

**CBL6-QC12** 6 ft, K200/KS200 lock side interface cable, 12 conductor with Molex on both ends

**CBL12-QC12** 12 ft, K200/KS200 system side interface cable, 12 conductor with Molex on one end, pinned one end

**WT-1** Wiegand test box with LED indicators

**WT-2** Wiegand test box with LCD backlit display and LED indicators



## How to Order

| Series | Model                                      | Color          | Knob Type      |
|--------|--|----------------|----------------|
| K200   | - 622                                      | - B            | 2              |
|        | <b>622</b> Non-Paired for Doors (standard) | <b>B</b> Black | <b>2</b> Pinch |

# HES KS200

- Supports HID multiCLASS SE® card technologies
- Hard powered by 12-24VDC (+/-10%)
- Integrated locked state (handle), cam rotation and tamper monitoring
- Optional external DPS sensor for real-time door status monitoring
- ElectroLynx® connectors for plug-n-play connectivity

## Accessories

**SFIC** Medeco X4 SFIC cylinder and 2 keys (1 control, 1 user)

**SFIC-BC** KS SFIC blank, black plastic core

**KS-DPS** Surface mount DPS (external)

**KS-CAM38** CAM: 38MM-1

**KS-CAM45** CAM: 45MM-5

**CBL6-QC12** 6 ft, K200/KS200 lock side interface cable, 12 conductor with Molex on both ends

**CBL12-QC12** 12 ft, K200/KS200 keep side interface cable, 12 conductor with Molex on one end, pinned one end

**WT-1** Wiegand test box with LED indicators

**WT-2** Wiegand test box with LCD backlit display and LED indicators



## How to Order

| Series | Model                             |
|--------|-----------------------------------|
| KS200  | - 640                             |
|        | <b>640</b> Wiegand, MultiCLASS SE |

# Online Integrated Wiegand

## HES K200

The flexible integrated cabinet locking solution for use with swinging and sliding cabinet doors and drawers with a door thickness of up to 1-1/2". The HES K200 comes standard with locked state and tamper monitoring, optional mechanical key override and over 150 lbs of holding force. The lock connects using hard wired integrated Wiegand communication to bring access control to cabinet doors and drawers where audit trail and real-time monitoring are required.

## HES KS200

Designed to install easily on most cam-activated swing handle server cabinet doors with a 150 x 25 mm lock prep, the HES KS200 comes standard with locked state monitoring and supports a 6 or 7-pin SFIC (Small Format Interchangeable Core) mechanical key override. For high security applications an optional extended DPS monitoring sensor can be connected to ensure that the cabinet is closed, locked and secure. It uses hard wired integrated Wiegand communication to bring real-time monitoring and managed access to server cabinet doors that protect against malicious attacks or tampering.



# Online Wired



## HES 610

The versatile, compact, cost effective cabinet lock with over 200 lbs of holding force that can be used to secure sliding or swinging drawers or doors. Available with or without locked state monitoring.

- Hard powered by 12-24VDC (+/-10%)
- Fail safe / fail secure operation (field selectable)
- Surface mounts easily with minimal tools

### How to Order

| Series | Option (s)                 |
|--------|----------------------------|
| 610    | – LM                       |
|        | (blank) No Monitoring      |
|        | LM Locked State Monitoring |



## HES 660

The strongest multi-purpose cabinet lock available from ASSA ABLOY with over 1,000 lbs of holding force that can be used to secure sliding or swinging drawers or doors. Available with or without locked state monitoring and a preload release function, allowing for smooth functional operation under a variety of environmental conditions.

- Hard powered by 12-24VDC (+/-10%)
- Fail secure operation
- Surface mounts easily with minimal tools
- Includes 6 feet [1.8m] of jacketed cable

### Accessories

**KO** 660 Mechanical Key Override

### How to Order

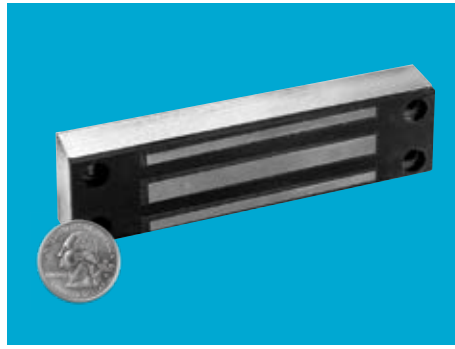
| Series | Voltage     | Option (s)  |
|--------|-------------|---|
| 660    | – 12V       | – LBSM – Preload                                  |
|        | 12V 12 Volt | (blank) No Preload, No Monitoring                 |
|        | 24V 24 Volt | Preload Up to 15 lbs                              |
|        |             | LBSM Locked State Monitoring                      |
|        |             | LBSM–Preload Locked State Monitoring with Preload |

# Securitron MCL

The durable and compact 170 lb electromagnetic cabinet lock that is ideal for extending access control to secure sliding or swinging cabinet doors – indoors or out.

Typical applications include jewelry cases, museum displays, gun cabinets, pharmaceutical storage cabinets or cash drawers.

- Fully sealed electronics - tamper proof and weatherproof
- Surface mounts easily with minimal tools using universal mounting bracket
- Includes 6 feet [1.8m] of jacketed cable



## How to Order

Model Series

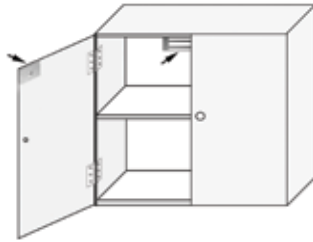
MCL-24

MCL-24

# Securitron M32-SS

The durable split strike 600 lb (300 lbs per strike) electromagnetic cabinet lock that is ideal for extending access control to secure large double-door cabinet and enclosure outswinging door applications that share a center latching point – indoors or out.

- Supports 5/8" to 7/8" [15.75mm to 23 mm] door thickness
- Fully sealed electronics - tamper proof and weatherproof
- Surface mounts easily with minimal tools
- Includes 10 feet [1.8m] of jacketed cable
- Optional BondSTAT magnetic bond sensor



## How to Order

| Model Series  | Monitoring Options                           | Strike Plate Options |
|---------------|--|----------------------|
| M32           | BD   | -SS                  |
| M32 (600 lbs) | (blank) No Monitoring<br>BD BondSTAT Monitor | SS Split Strike      |

# Online Wired



ASSA ABLOY is the global leader in door opening solutions, dedicated to satisfying end-user needs for security, safety and convenience

**ASSA ABLOY**



## USA

Electronic Security Hardware

800.626.7590 | fax: 866.582.4641 | [assaabloyesh.com](http://assaabloyesh.com)  
[orders.esh@assaabloy.com](mailto:orders.esh@assaabloy.com)

Medeco

877.633.3261 | [medeco.com](http://medeco.com)  
[orders@medeco.com](mailto:orders@medeco.com)

## CANADA

800.461.3007 | [assaabloydss.ca](http://assaabloydss.ca)  
[orders.dss.ca@assaabloy.com](mailto:orders.dss.ca@assaabloy.com)

Patent pending and/or patent [www.assaabloydss.com/patents](http://www.assaabloydss.com/patents)

Copyright © 2019, Hanchett Entry Systems, Inc., an ASSA ABLOY Group company. All rights reserved. Reproduction in whole or in part without the express written permission of Hanchett Entry Systems, Inc. is prohibited. ESH-052-0319